

Update:

Analysis Probe Information for New Agilent Logic Analyzer Modules and Agilent 16700-Series Logic Analysis Systems

You *must* read this booklet if you plan to use your analysis probe with a new Agilent logic analyzer module.

You *should* read this booklet if you are using an Agilent 16700-series logic analysis system with operating system version A.01.40.00 or higher.

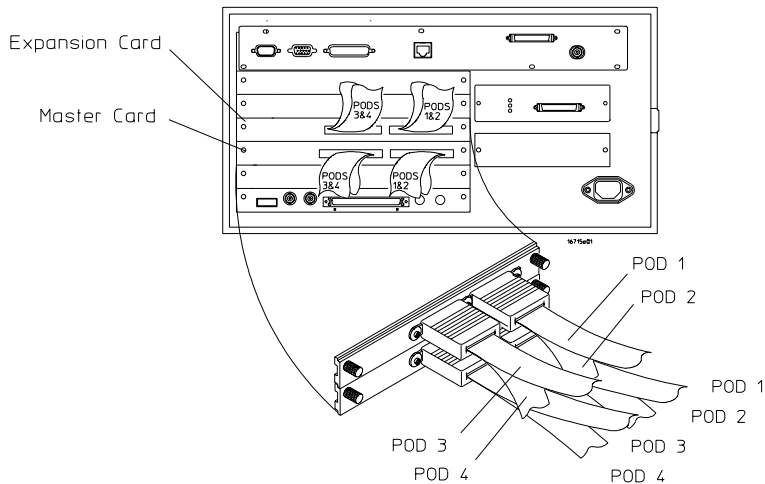
Below are the new logic analyzer modules referred to in this booklet.

- 16715A
- 16716A
- 16717A
- 16718A
- 16719A
- 16750A
- 16751A
- 16752A

This booklet provides information which is not included in your analysis probe or processor solution manual:

- How to connect an analysis probe to a logic analyzer modules (page 2)
- VisiTrigger interface for logic analyzer modules (page 4)
- New setup window for all logic analyzer modules in Agilent 16700-series logic analysis systems (page 5)

How to connect an analysis probe to a new logic analyzer modules



Your analysis probe or processor solution manual does not include information about the pod connections nor about the names of the configuration files for the logic analyzer modules.

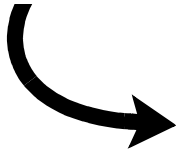
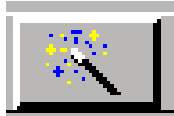
Instead, use the Setup Assistant to connect and configure your logic analyzer.

The Setup Assistant will:

- Tell you how to connect the logic analyzer pods to your analysis probe or built-in connectors.
- Load the correct configuration files into the logic analyzer.
- Help you set up the emulation module.

How to connect an analysis probe to a new logic analyzer modules

- 1 Attach the probing adapters and analysis probe to your target system, if necessary. See the instructions in your analysis probe or processor solution manual.
- 2 Turn on the logic analysis system, if it is not already on.
- 3 Install the processor support package for you target processor from the CD-ROM. See the instructions on the CD-ROM package or in your processor solution manual.
- 4 Select the Setup Assistant icon in the main system window and follow the instructions.



Select your target system and analysis probe or inverse assembler.

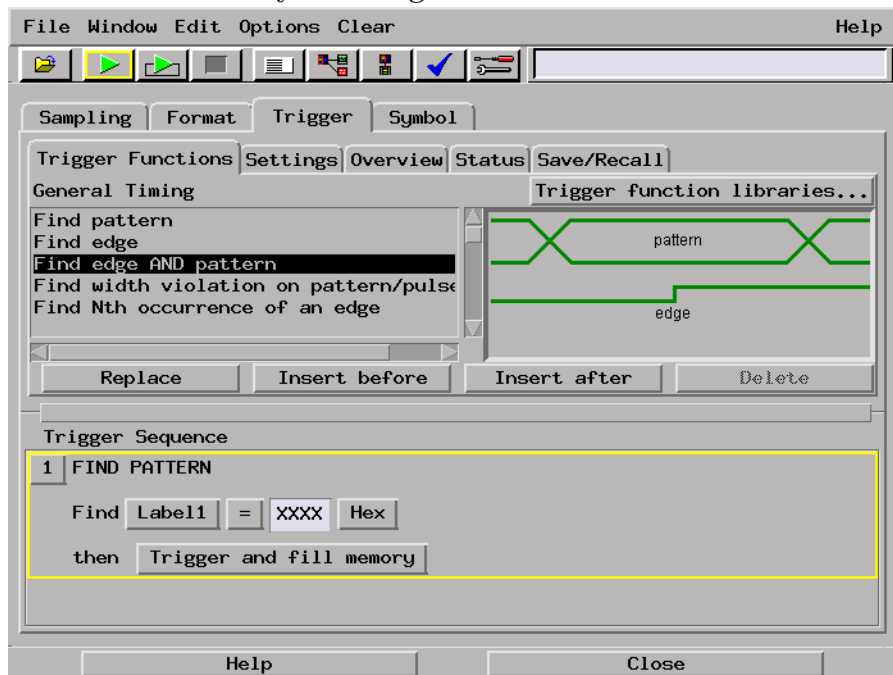
Target Manufacturer:	Target Model Number:	Product Number:
ARM	MPC740/MPC750	HP E8127A
Hitachi	MPC7400	HP E8128A
IBM	MPC745/MPC755	
Intel	MPC801	
Motorola 68K	MPC821	
Motorola CPU32	MPC8240	
Motorola M-CORE	MPC8260	
Motorola PowerPC	MPC850	
Toshiba	MPC855	

If your target processor is not listed, -->

VisiTrigger interface for new logic analyzer modules

The logic analyzer modules referred to in this booklet have a new interface for creating triggers.

As a result, the triggering procedures in your analysis probe or solution manual may be changed.



See Also

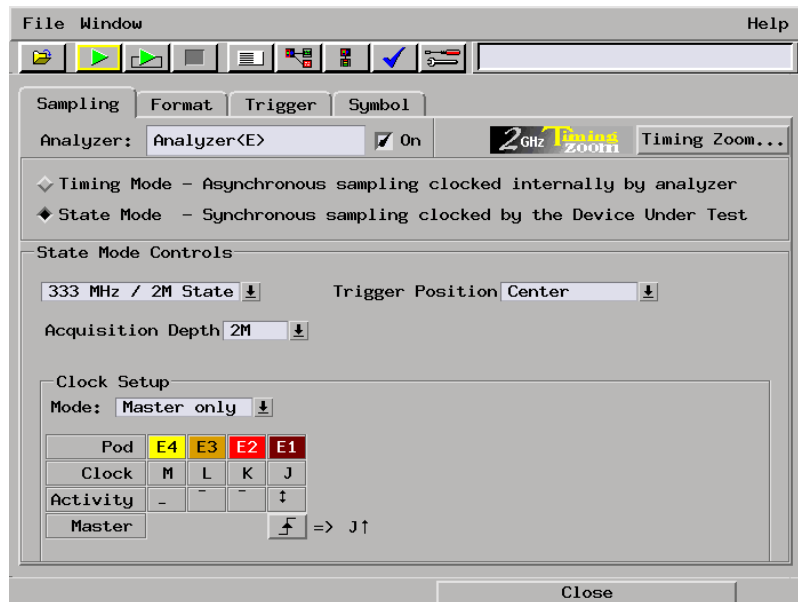
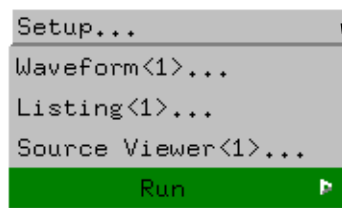
VisiTrigger Quick Start, supplied with your logic analyzer module.

Online help in the Setup window.


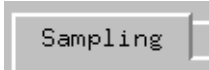

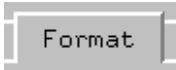

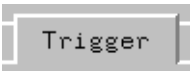
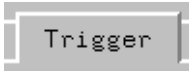

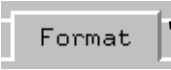

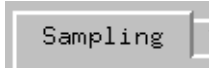

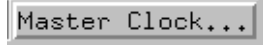
Measurement Examples under the system help in your logic analysis system.

New Setup window for all logic analyzer modules in Agilent 16700-series logic analysis systems

The Configuration, Format and Trigger tabs of the Setup window have changed beginning with Version A.01.40.00 of the logic analysis system software. As a result, a few of the procedures in your analysis probe or solution manual may be changed:



New Setup window for all logic analyzer modules in Agilent 16700-series logic analysis systems

Task	Before Version A.01.40.00	Version A.01.40.00
Select state or timing mode		
Assign analyzer pods to a machine		 
Set trigger position to Begin, Center, or End		 
Set up clock qualifiers	 	 <input checked="" type="checkbox"/>  

See Also

See the online help for more information on how to use the Setup window.

© Copyright Agilent Technologies
1999-2000
All Rights Reserved.

Reproduction, adaptation, or
translation without prior written
permission is prohibited, except
as allowed under the copyright
laws.

Restricted Rights Legend

Use, duplication, or disclosure by
the U.S. Government is subject to
restrictions set forth in
subparagraph (C) (1) (ii) of the
Rights in Technical Data and
Computer Software Clause in
DFARS 252.227-7013. Agilent
Technologies Company, 3000
Hanover Street, Palo Alto, CA
94304 U.S.A. Rights for non-DOD
U.S. Government Departments
and Agencies are set forth in FAR
52.227-19 (c) (1,2).

Document Warranty

The information contained in this
document is subject to change
without notice.

**Agilent Technologies makes
no warranty of any kind with
regard to this material,
including, but not limited to,
the implied warranties of
merchantability or fitness for
a particular purpose.**

Agilent Technologies shall not be
liable for errors contained herein
or for damages in connection with
the furnishing, performance, or
use of this material.

About this edition

This is the *Update: Analysis
Probe Information for
New Agilent Logic Analyzer
Modules and Agilent 16700-
Series Logic Analysis
Systems.*

Publication number
16700-92009, June 2000
Printed in USA..

The information in this manual
previously appeared in:
16700-92003, December 1999
16700-92001, May 1999

New editions are complete
revisions of the manual. Many
product updates do not require
manual changes, and manual
corrections may be done without
accompanying product changes.
Therefore, do not expect a one-
to-one correspondence between
product updates and manual
updates.

Agilent Technologies
Manual Part Number 16700-92009

